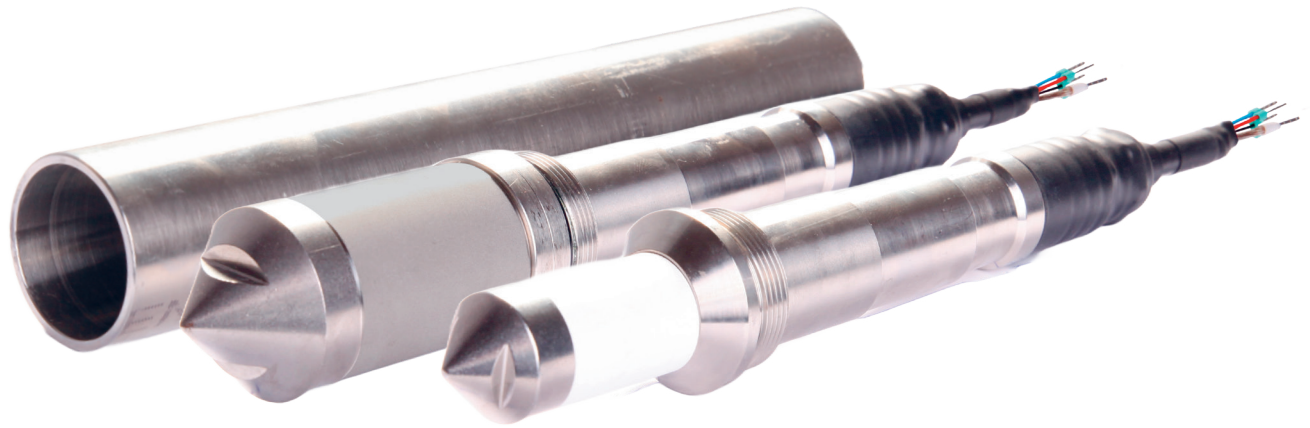


# Press-in Piezometer

Types PP3 RK-E and PP4 RS-E






The sensors PP3 RK-E and PP4 RS-E designate pore water pressure transducers for pressing into soft soils suitable. For this type of installation, the sensors are particularly robust and have a connection thread to mount an press-in adapter. The outstanding feature is the ring filter made of ceramic or sintered metal with an extra large surface. The large filter surface ensures optimal contact with the water-saturated soil.

## TECHNICAL DATA

	PP3 RK-E	PP4 RS-E
Dimensions (Ø / length*)	40 × 313 mm	40 × 330 mm
Material	V4A 1.4571	V4A 1.4571
Weight*	1500 g	1745 g
Filter type	Ceramic	Sintered metal
Filter area	29 cm <sup>2</sup>	58 cm <sup>2</sup>
Protection class	IP 68	IP 68

\*(including press-in sleeve)

## SENSOR-SPECIFIC DATA

Sensor types	 AU Pressure Sensor piezoresistive, 4-wire system	 AI Pressure Sensor piezoresistive, 2-wire system	 VW Pressure Sensor vibrating wire system
Supply	1 mA	15–30 V	VW excitation (pulse, sweep)
Output signal	0–250 mV	4–20 mA	2–3.3 kHz
Standard measuring ranges	0.5 / 1 / 2 / 5 / 10 / 20 / 50 / 100 bar	0.5 / 1 / 2 / 5 / 10 / 20 / 50 / 100 bar	0.7 / 1.7 / 3.5 / 5 / 7 / 10 / 20 / 35 / 70 / 100 bar
Over range	50 % FS	50 % FS	50 % FS
Resolution	± 0.01 % FS	± 0.01 % FS	± 0.01 % FS
Accuracy (laboratory)	± 0.25 % FS	± 0.25 % FS	± 0.25 % FS
Linearity	< 0.5 % FS	< 0.5 % FS	< 0.5 % FS
Temperature range	+5 °C to +80 °C	+5 °C to +80 °C	+5 °C to +80 °C
Thermal zero shift	≤ 0.06 % FS/K	≤ 0.06 % FS/K	≤ 0.06 % FS/K
Temperature sensor	Thermistor (optional)	Thermistor (optional)	Thermistor (standard)
Maximum cable length	1000 m	2000 m	2500 m