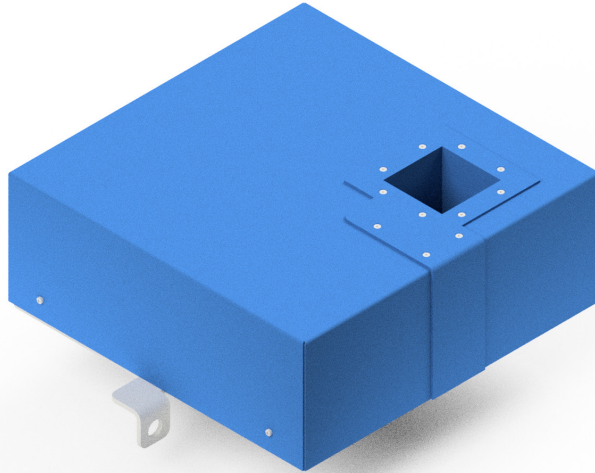


Electronic Pendulum Readout

Type GEPR-90

Art.-No. 82.60



The vector plumb GEPR is an opto-electronic instrument for the automatic measurement of direct and inverted pendulum systems as well as wire alignments. The current wire position is determined using a semiconductor laser using the shadow casting principle. The GEPR is characterised by a very high level of accuracy in either one or two measuring axes. It is therefore particularly suitable for the continuous monitoring of pendulum systems in dams or shafts.

TECHNICAL DATA

		Special features
Dimensions:	550 × 455 × 275 mm	<ul style="list-style-type: none">Internal signal filtering possibleAdjustment of ambient lightDetection of several pendulum wiresAbsolute measurement possible by using a reference wireInternal limit value monitoring and alarm (optional)Tablet to display measured values directly (optional)Additional protective cover for optical components (optional)Specific system customisation (on request)Very high measuring accuracy and large measuring range
Measuring axis:	X- and/or Y axis	
Measuring range:	90 mm per axis	
Resolution (digital):	< 0,005 mm (5 µm)	
Linearity:	< 0,02 mm (20 µm)	
Reproducibility:	< 0,01 mm (10 µm)	
Output Signal (analogue):	0–10 V; 4–20 mA (optional)	
Output Signal (digital):	TCP/IP (optional)	
Operating Temperature:	0–45 °C	
Switching output (for alarms):	2 digitale (optional)	
Wire diameter:	≥ 2 mm	
Protection class:	IP64 DIN EN 60529	
Laser class:	1M (P _{max} 2mW)	
Power supply:	90–250 V AC / < 120 W	