

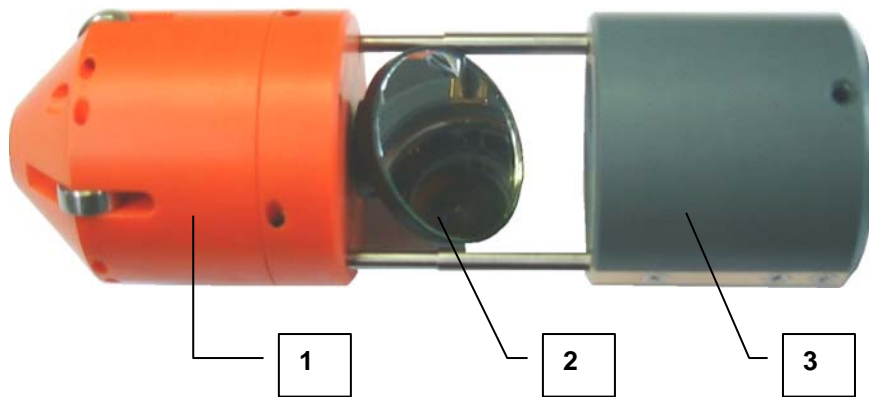
GLÖTZL Baumeßtechnik

BOREHOLE MODULAR PROBE-LATERAL VIEW ADAPTER

Type: BMS-VS56/1

Art. No.: 78.01.05.02

- Simple assembly on Glötzl BMS-video module
- Stepless adjustment of view direction, controllable by software (left, right, stop)
- Stepless adjustment of size of picture cut-off by changing of distance between objective and mirror
- Display of view direction in the picture
- Manufactured of impact-resistant plastic



The picture shown at the left is presenting the Glötzl lateral view adapter.

- 1 = Lateral view adapter head, with motor
- 2 = Reversing mirror
- 3 = Guide shoe for attachment at video probe

Application:

The lateral view adapter is mounted as accessories at the Glötzl video module. The view direction of the objective is laterally oriented by 90° by a mirror. By this it is possible to assess e.g. cavities in salt in a boring without distortion.

The mirror can be controlled multistage by the control- and evaluation software GLNP (left, right, stop). Therefore, a complete view of the borehole dimension (360°) is possible.



Photo in salt rock without lateral view adapter

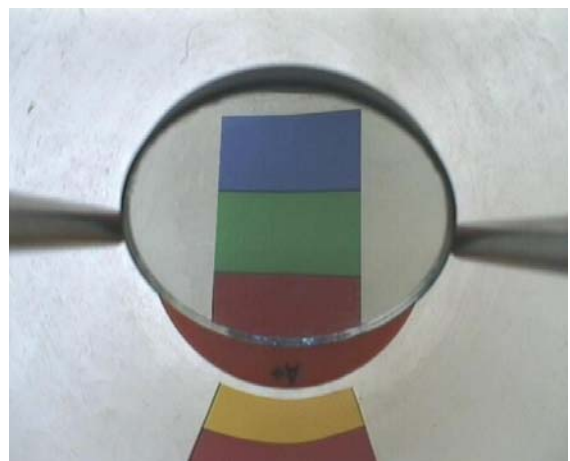


Photo in salt rock with lateral view adapter
The proportion of dimensions can now correctly be interpreted.

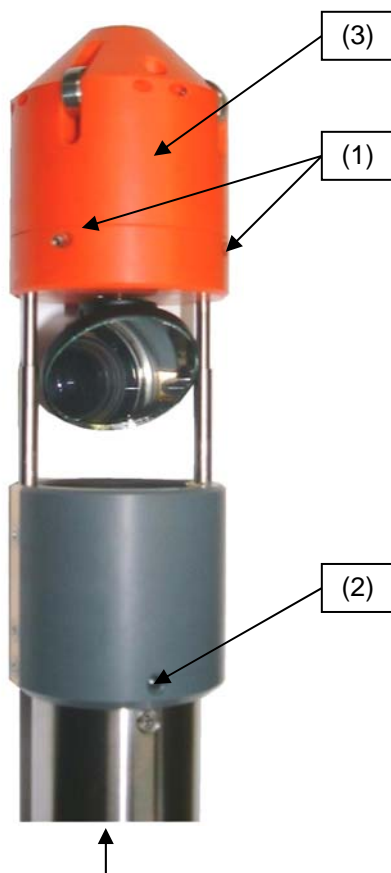
Possible operating variants:

The following figures are showing possible combinations of the Glötzl BMS-modules, for which the lateral view adapter can be used.:



- Variant 1:** Guide adapter, video probe, lateral view adapter.
Variant 2: Basic probe, video probe, lateral view adapter.
Variant 3: Basic probe, calibre probe, video probe, lateral view adapter.

Assembly of lateral view adapter



Video probe

1. Push lateral view adapter on video modulus.
2. Align the lateral view adapter:
The two adjusting screws (1) are showing to the top, the video camera is delivering pictures with correct position.
3. Fasten lateral view adapter with 4 countersunk bolts M3x10 (2).
The two adjusting screws are used for fixing and also for current supply to the motor.
Fasten screws only with moderate force!
4. Adjust picture size of lateral view with screws (1):
 - Open both screws (1) by two rotations.
 - Adjust required picture size by displacement of head (3).
 - Retorque both screws (1) .

Technical data lateral view adapter:

Length:	175 mm
Diameter:	57 mm
Rotation range:	360° (stepless)
Speed:	50 s for 360°
Weight:	350 g