

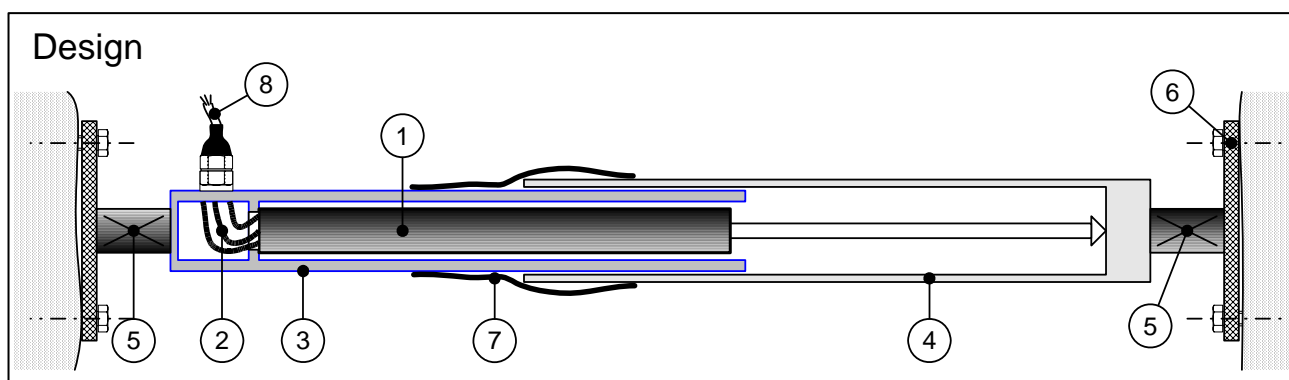
GLÖTZL Baumeßtechnik

Fissuremeter – Heavy Type with Electric Displacement Transducer

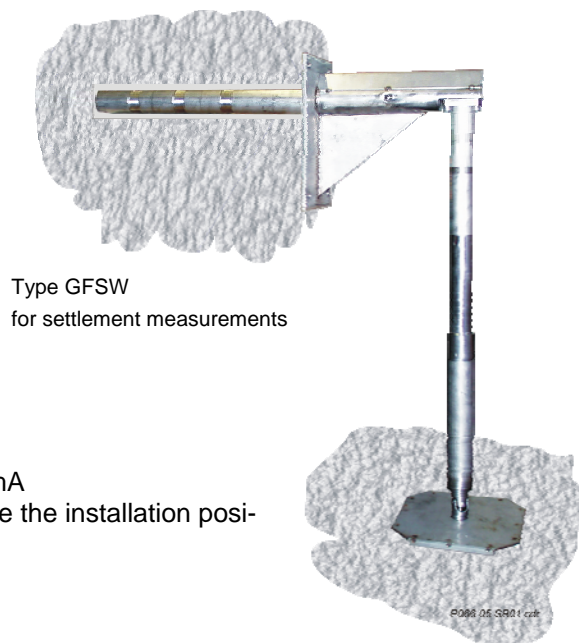
**GSFW : :
Art. No. 66.05**

The heavy-type fissuremeter is used in order to measure longitudinal misalignments in displacement. For decoupling of the anchor plates the connections are equipped with universal joints. By these joints the longitudinal displacements which should be measured are transferred and eventual mechanical horizontal displacements will be deflected.

The fissuremeter is consisting of two telescopic special-steel tubes with sealings which are movable one into the other. Inside there is a displacement transducer installed which is sensing the displacement of the special-steel tubes and is transferring it as measuring value.



1. Displacement transducer with tracer pin
2. Cable connection area
3. Telescopic inner tube Ø 50mm
4. Telescopic outer tube Ø 60mm
5. Universal joints
6. Anchor plate
7. Sealing and protection tape



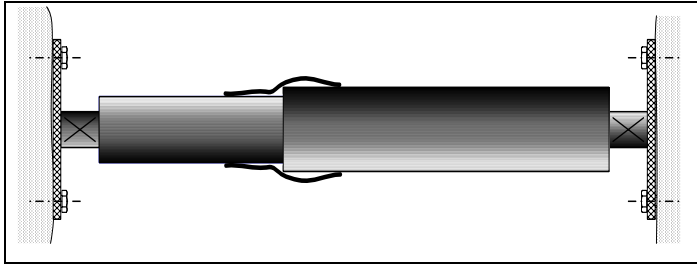
The following displacement transducers are available:

- GWW..... with Resistive bar, measuring output 4 – 20 mA
Usually, the electronics are placed outside the installation position - for better access.
- GWD..... with Passive resistive element 5 kΩ,

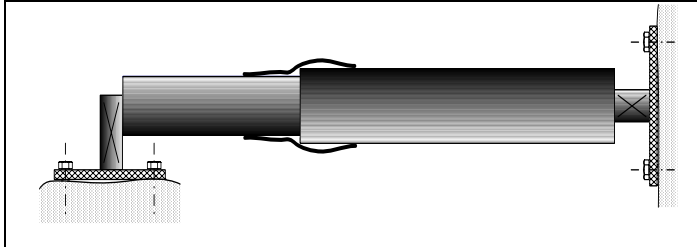
Order no.:	Displacement [mm]	Measuring signal		Measuring length [mm]	
		5kΩ	4 - 20 mA		
66.05.01.XX.YYY	40	01.	02.	300 – 1500 mm	to be specified
66.05.02.XX.YYY	100	01.	02.	400 – 1500 mm	
66.05.03.XX.YYY	200	01.	02.	600 – 1500 mm	
66.05.04.XX.YYY	400	01.	02.	800 – 1500 mm	

Measuring ranges and technical data are shown in the relevant leaflets for the displacement transducers, type GWW and GWD.

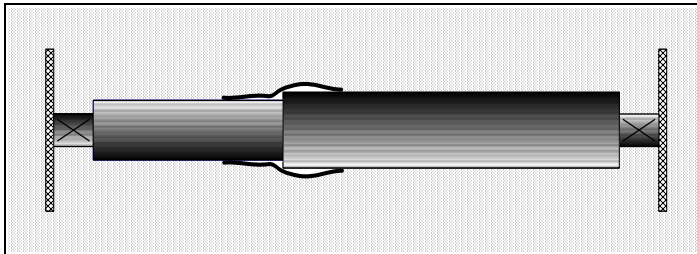
Application Examples



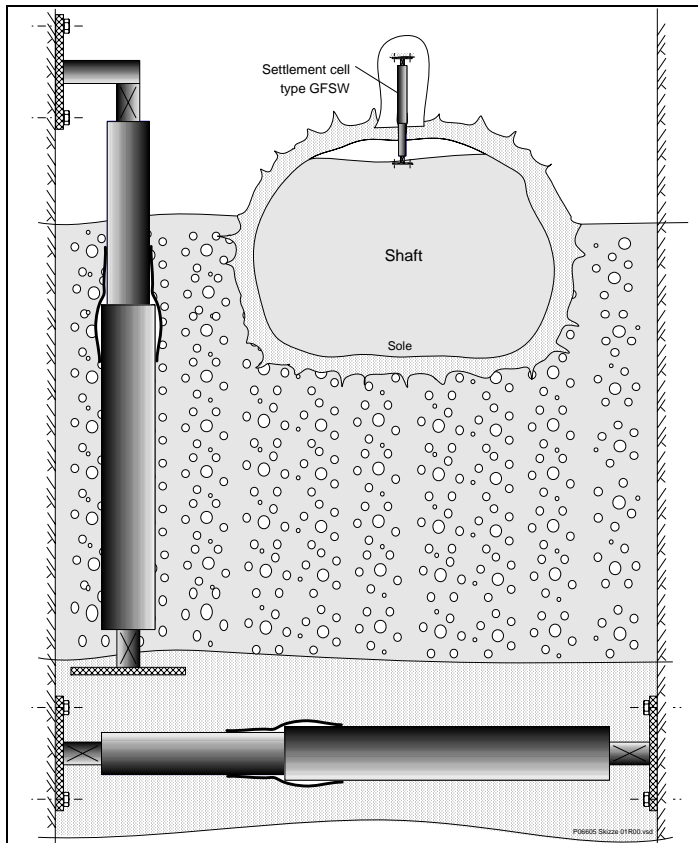
Installation between two abutments for sensing of convergency
Anchoring by anchor plates which are fixed at the joint



Installation between joint and sole
Anchoring at the joint and at the sole



Installation by anchor plates in displacements resp. in embankments



In shafts for sensing settlements in filling material and convergencies

Other models on customers' request:

- Meas. length up to 5m
- Meas. length from 20mm to 800mm
- Material: special steel or steel

Technical data:

Max. power-handling capacity	0.5 W at 40°
Max. operating load	10V
Temperature range	-30 °C to 70 °C
Potentiometer resistance	4.7 kΩ
Linearity	<± 1%
Resolution	0.01mm
Reproducibility	0.05mm
Resistive tolerance	±10%